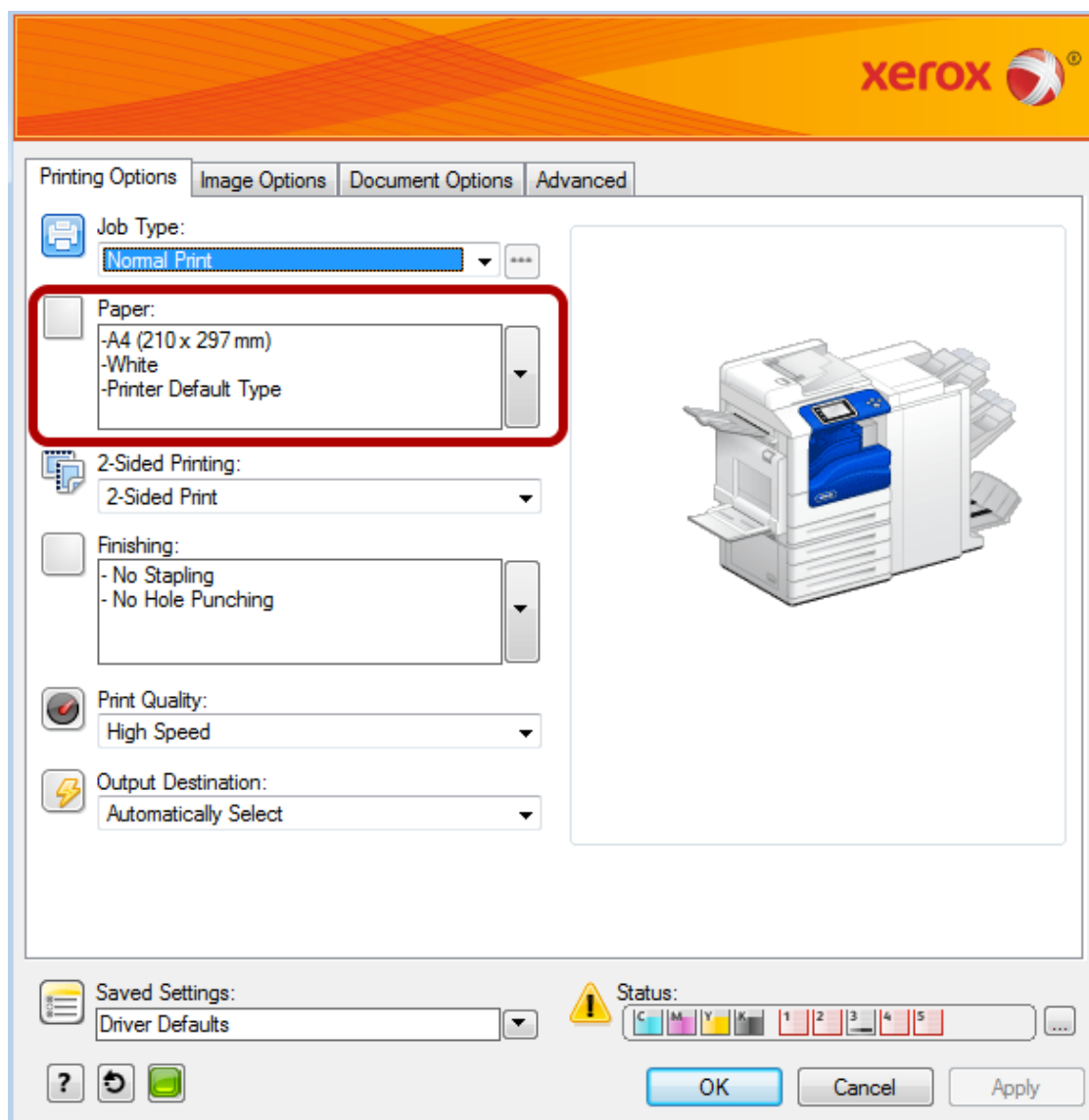


Phaser 4600 Printing

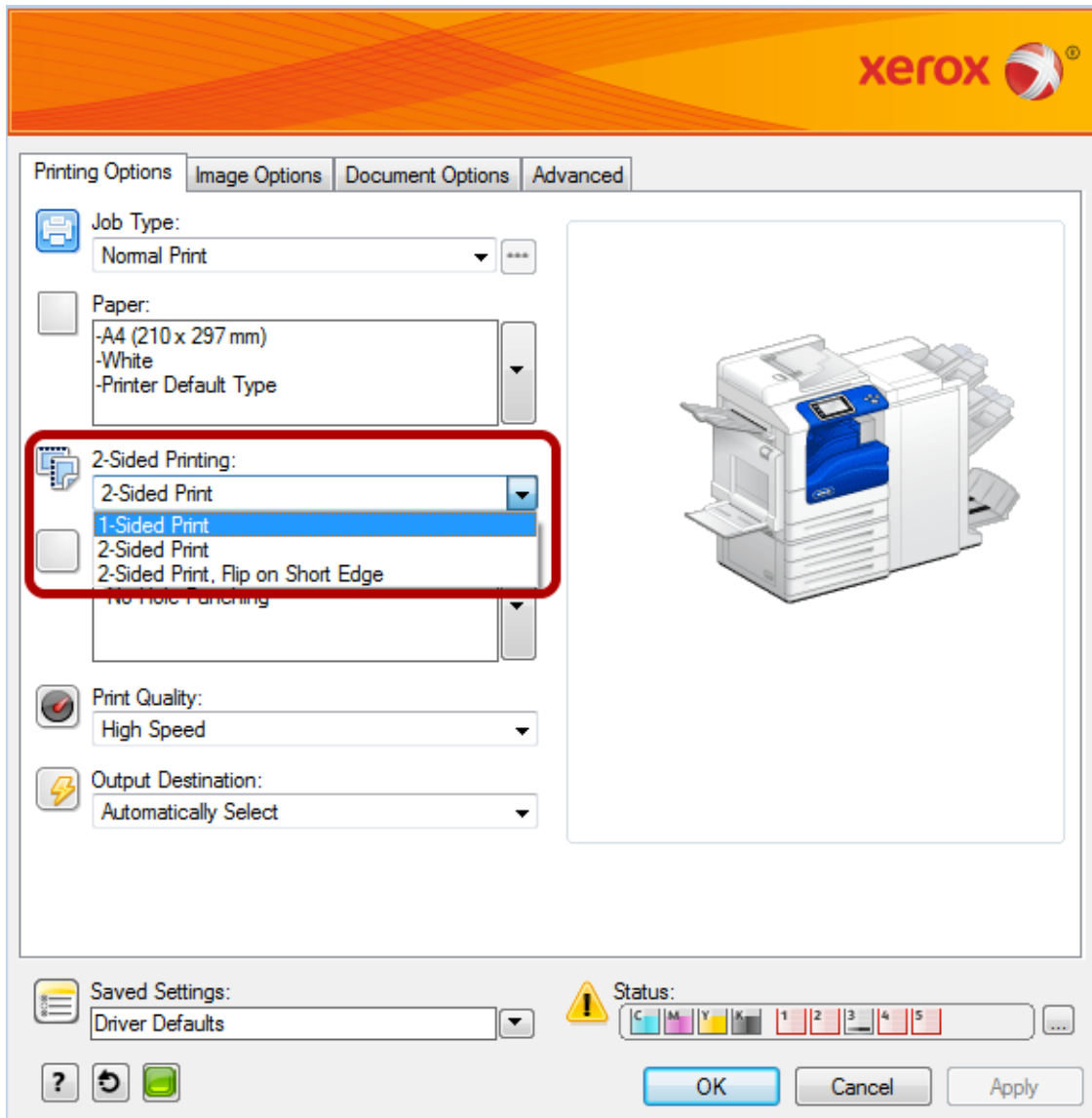
The Follow Me print driver has been given the full amount of features of the Multifunction Device. But you are able to use the Follow Me driver on the Single Function printers as well. Below describes the basics of printing using the Follow Me driver to a Phaser 4600.

Printing A4



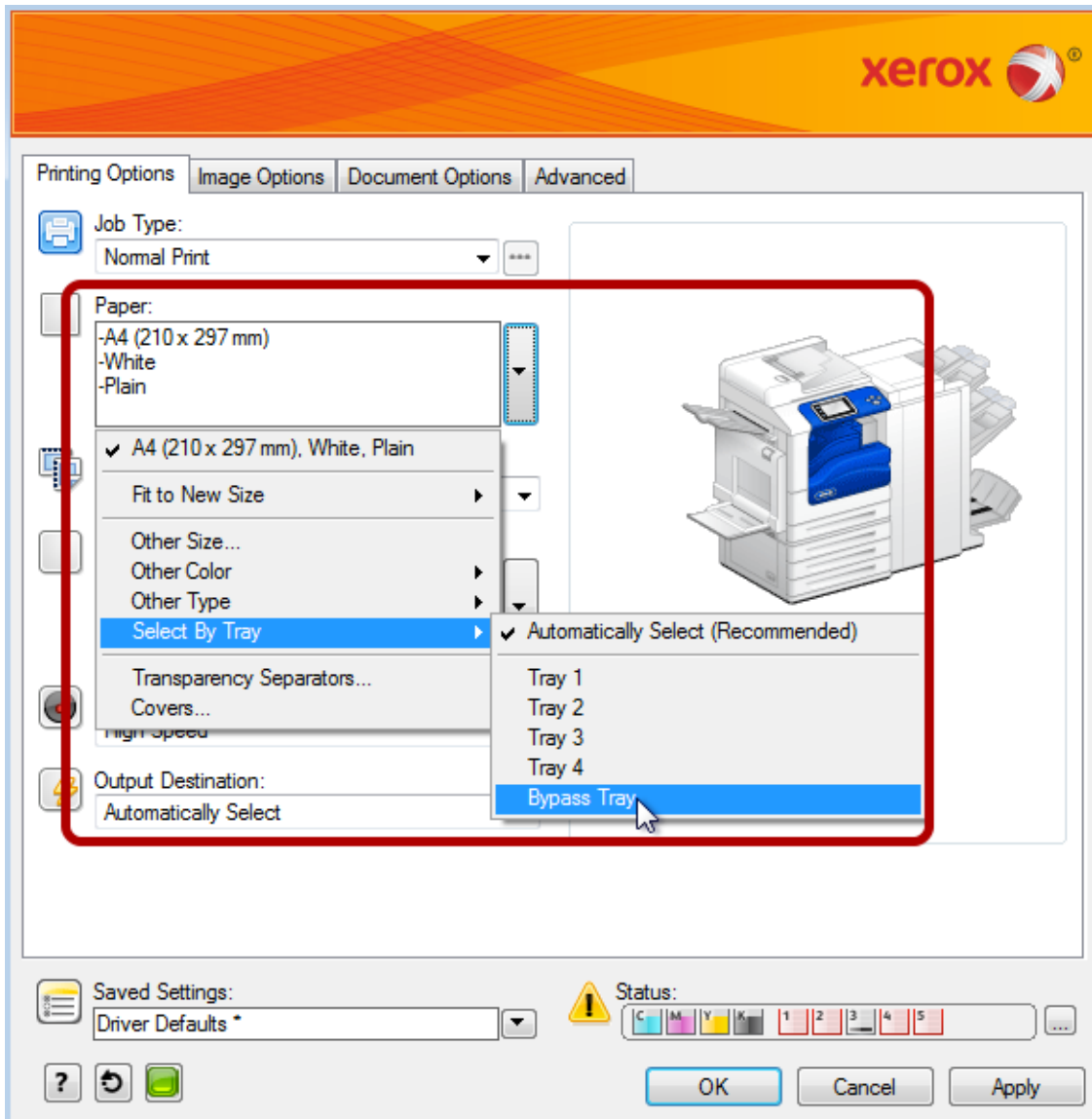
To print from the main paper tray onto A4 leave the driver to automatically select A4.

Double sided print



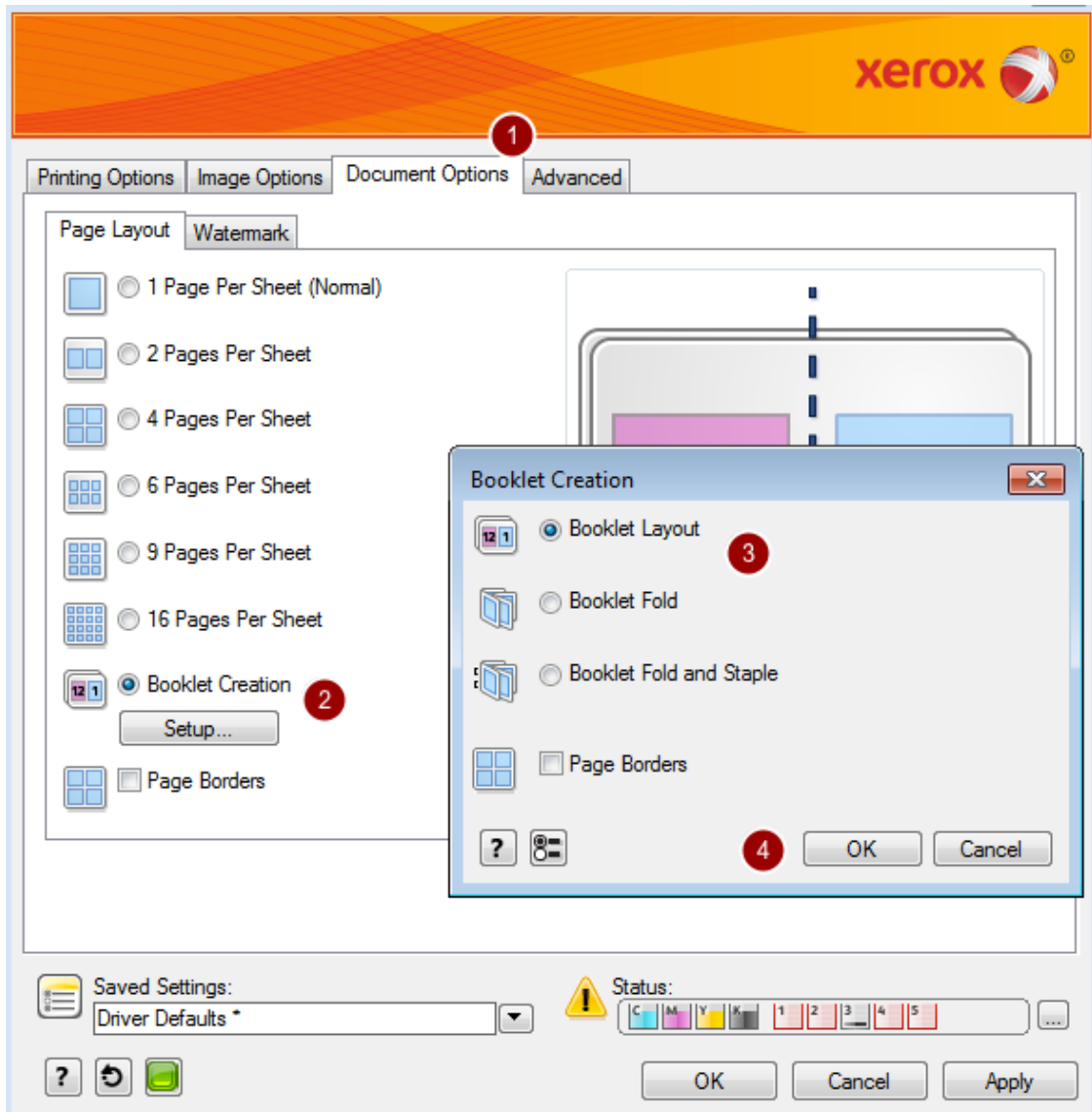
By default you will be printing 2 sided but you can change to 1 sided by selecting the 2-sided printing drop down.

Bypass printing



To print from the bypass select it in the Paper menu.

Booklet imposition



The layout tab allows you to impose A4 documents into a booklet.