

Wireless Network Configuration Guide Windows 8 & Windows 8.1

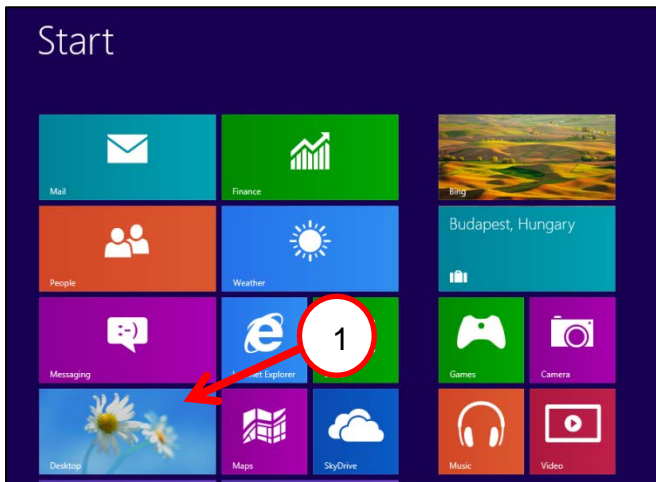
Please check that you are using the **correct help-sheet** by checking your version of Windows:
Start > Control Panel > System

Network Access

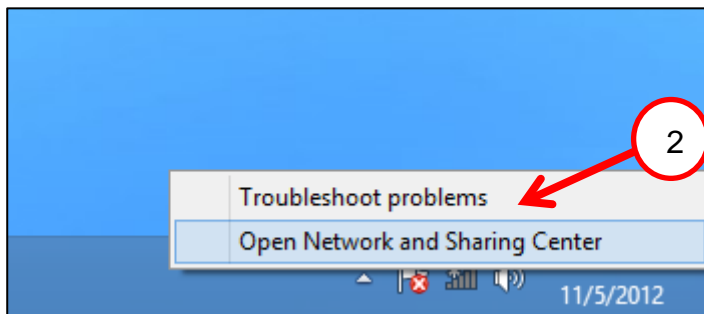
All users connecting to the network require Massey credentials.

- **Students:** Student ID + Password
- **Staff:** Usercode + Password

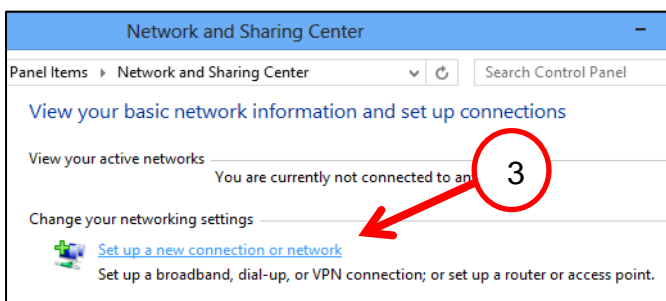
While most of the campus has wireless coverage, refer to the coverage map to identify the strongest connection points:
<http://wireless.massey.ac.nz> - Select Wireless coverage.



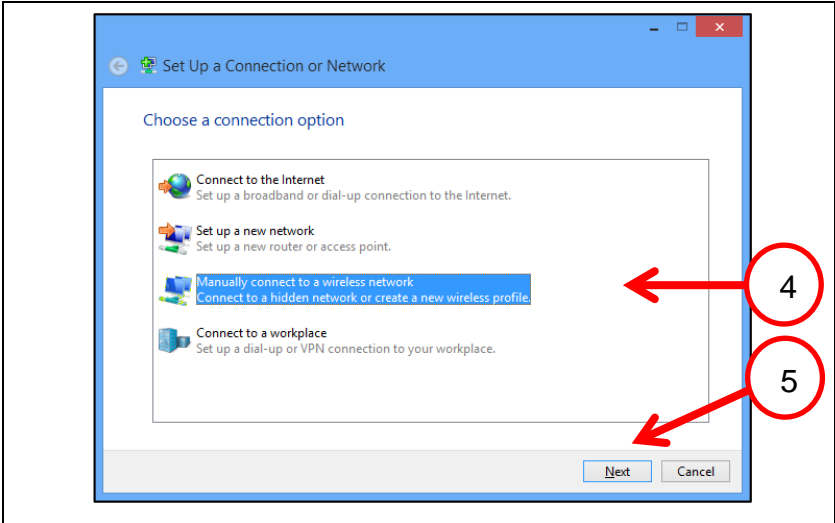
1. Click on **Desktop** from the start menu (or press the Windows key on your keyboard)



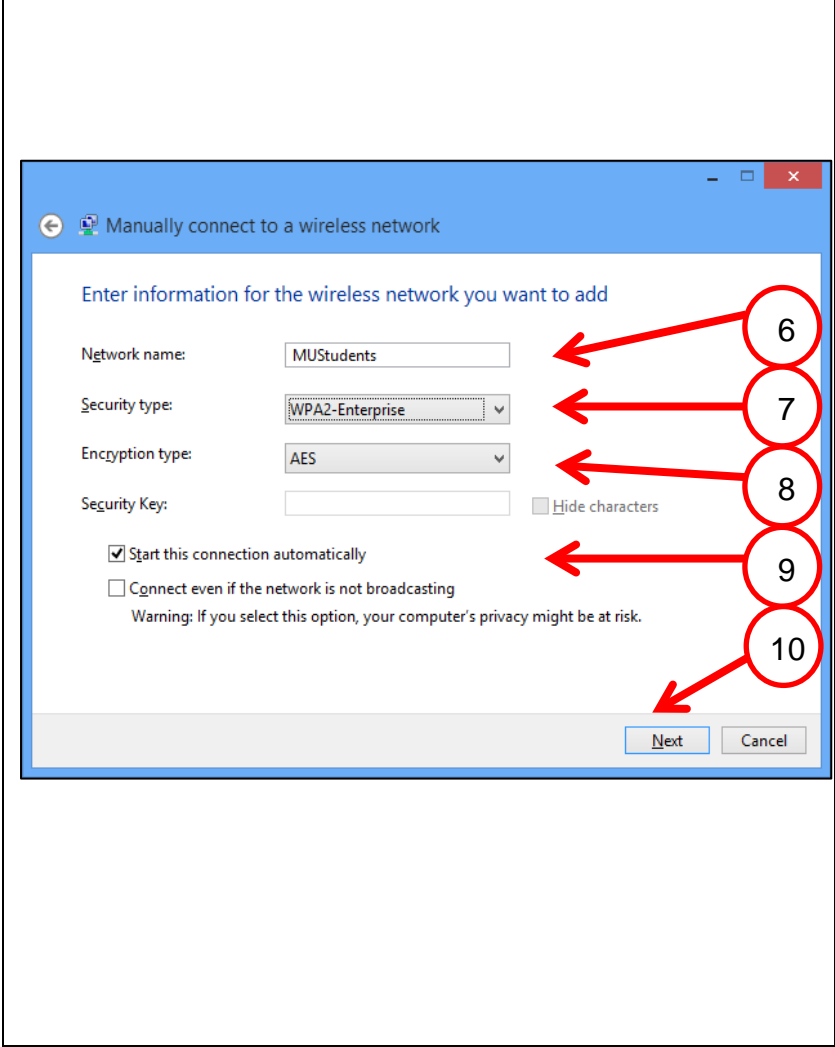
2. Right click on the network icon in the system tray, then click on **Open Network and Sharing Center**



3. Click on **Set up a new connection or network**



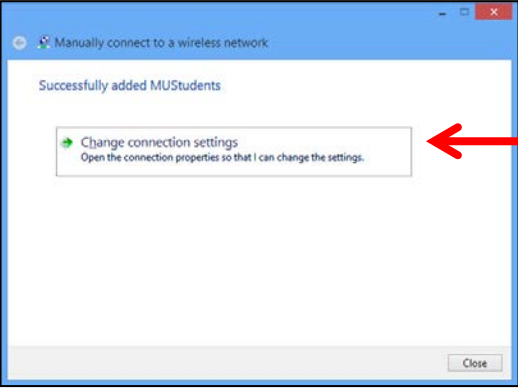
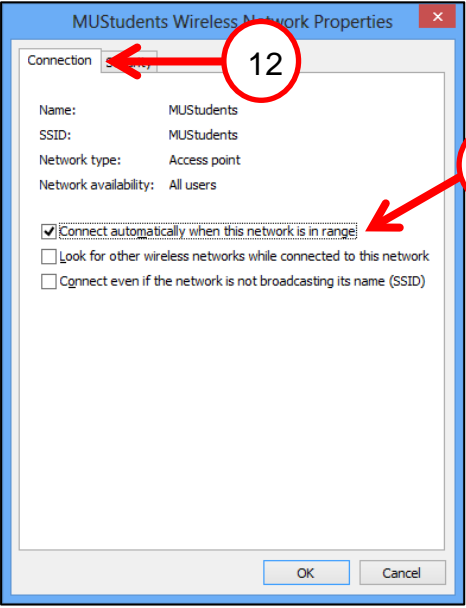
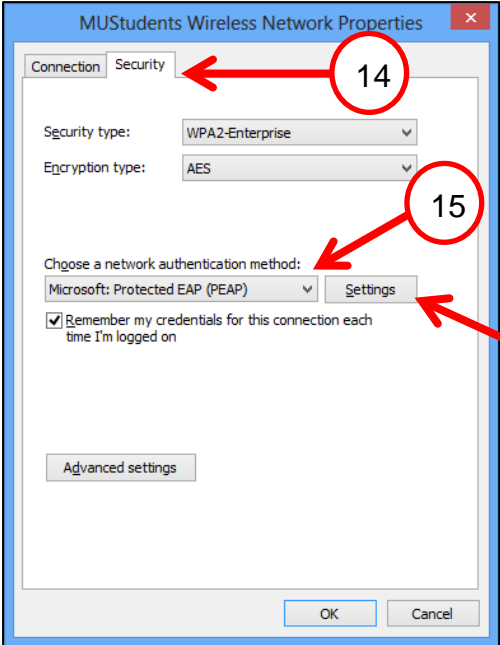
4. Select **Manually connect to a wireless network**
5. Click **Next**

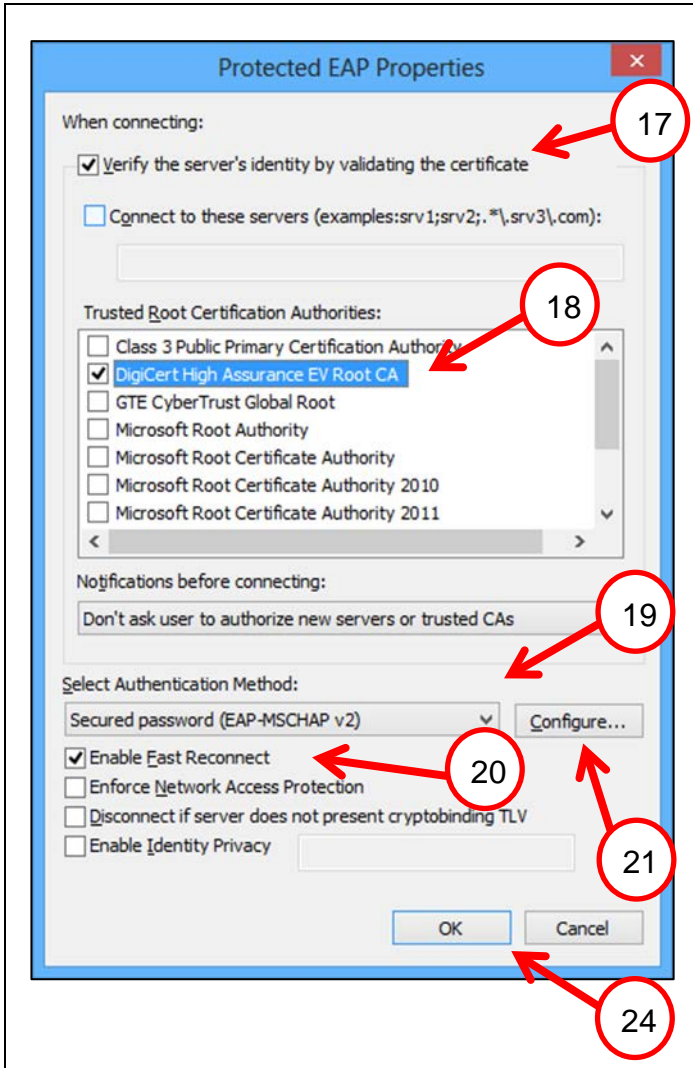


6. In the Network name field type in the name of wireless connection e.g: **MUSStudents**
- There are three wireless networks provided:

- **MUSStudents** - Student users on any equipment
- **MUStaffPrivateEquipment** - Staff using private or non-Massey equipment
- **MUStaff** - Staff using Massey-managed equipment (those with an ITXXXXXX number)

7. Choose **WPA2-Enterprise** in the Security type drop box
8. Choose **AES** in the Encryption type drop box
9. Make sure **Start this connection automatically** is ticked
10. Click on **Next**

	<p>11. Click on Change connection settings</p>
	<p>12. Choose the Connection tab</p> <p>13. Tick Connect automatically when this network is in range. The other boxes should not have ticks</p>
	<p>14. Click on the Security Tab</p> <p>15. Choose Microsoft: Protected EAP (PEAP) from the drop down menu.</p> <p>16. Click on the Settings button</p>



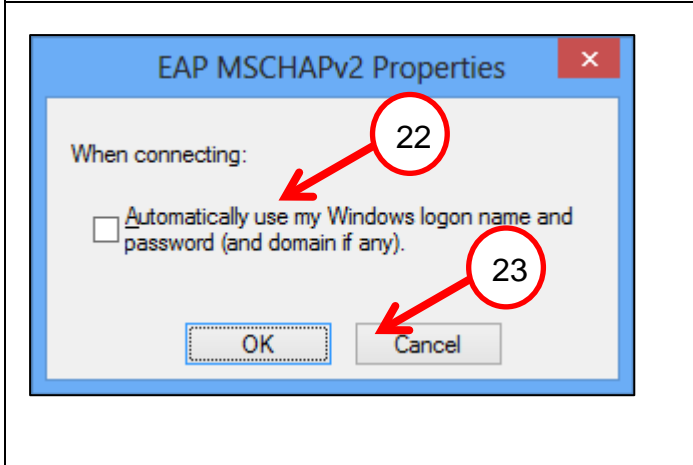
The Protected EAP Properties window will pop up

- 17. Tick **Verify the server's identity by validating the certificate**
- 18. Tick **"DigiCert High Assurance EV Root CA"**

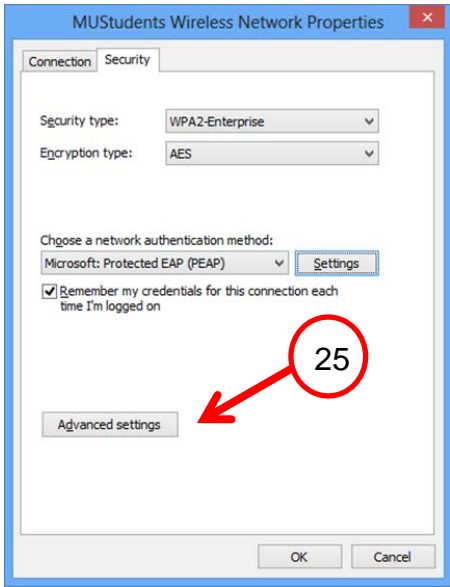
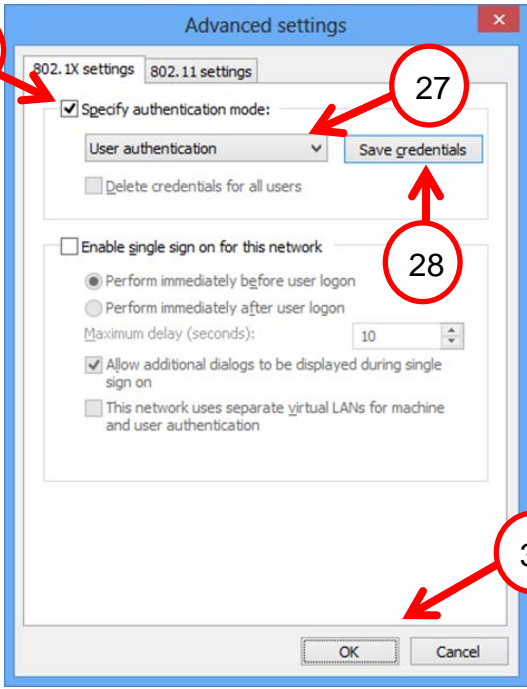
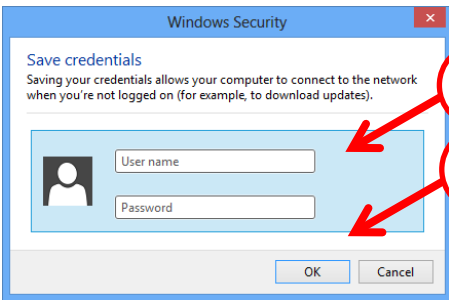
Note: If the DigiCert High Assurance EV Root CA certificate is listed twice in this list, tick both occurrences of this certificate.

If this certificate is not listed, do not choose a certificate. You will need to connect and fill in the details in step 29 then you can come back to the PEAP settings (step 19) .Once you have connected and the certificate is available, tick the DigiCert High Assurance EV Root CA certificate and click on **"OK"**.

- 19. Choose **Secured password (EAP-MSCHAP v2)**
- 20. Make sure **Enable Fast Reconnect** is ticked
- 21. Click on the **Configure** button



- 22. Make sure **Automatically use my Windows logon name and password** is un-ticked
- 23. Click on **OK**
- 24. On the **Protected EAP Properties** dialog, click **OK**

	<p>25. Click on Advanced Settings</p>
	<p>26. Ensure that Specify authentication mode is ticked 27. Select User authentication 28. Click Save credentials</p>
	<p>29. Enter your Student ID and Password 30. Click OK on the Windows Security dialog box 31. Click OK on the Advanced Settings dialog box</p>